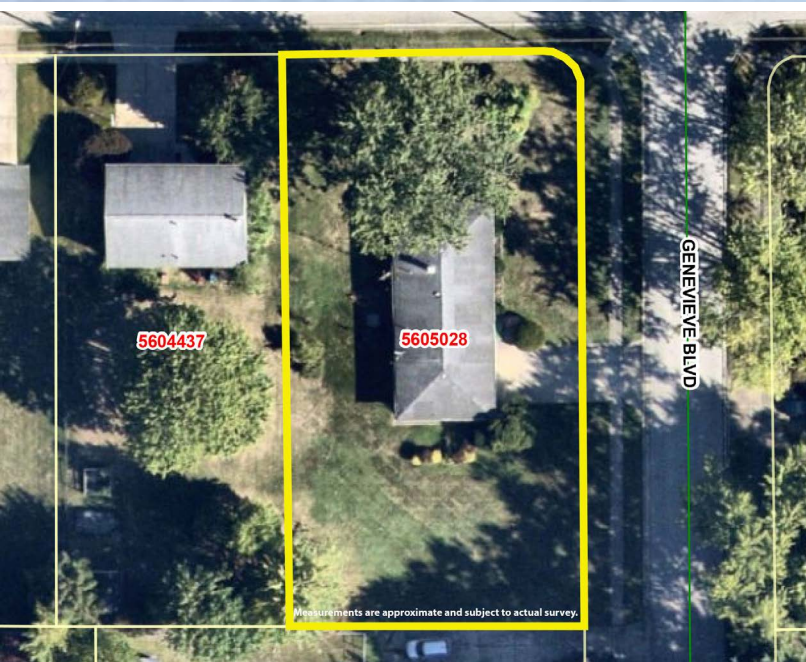


LIVE ONSITE AUCTION

THURSDAY, FEBRUARY 26, 2026, 12:30 PM
OPEN HOUSE AUCTION DAY 11:00 AM



REAL ESTATE



LIVE ONSITE WITH ONLINE BIDDING

Real Estate: One-owner brick ranch home offering 3 bedrooms and 1.5 baths, built in 1963 with 1,040 sq. ft. plus a full basement. The lower level includes a finished (dated) rec room with bar area and laundry. This home has good bones and several key updates already completed, including vinyl replacement windows, newer roof, HVAC system, and updated electric panel. Interior finishes are dated, an excellent opportunity for updates and added value. Features include a 2-car attached garage, small concrete patio, and a corner lot located in the highly desirable Stow community. A great opportunity for homeowners, investors, or renovators looking for a solid home in a strong location. Summit Co. parcel #5605028. Half year taxes are \$1,549. .39-acre city corner lot.

Terms On Real Estate: 10% down auction day, balance due at closing. A 10% buyer's premium will be added to the highest bid to establish the purchase price. Any desired inspections must be made prior to bidding. All information contained herein was derived from sources believed to be correct. Information is believed to be accurate but not guaranteed.

Auction By Order Of: Summit Co. Probate case #2025ES00644A

BRICK RANCH HOME

3 Bedrooms, 1.5 Baths,
1,040 Sq. Ft.

4138 GENEVIEVE BLVD.,
STOW, OH 44224



BOB YOUNG
AUCTIONEER/REALTOR®
330.329.3885
byoung@kikocompany.com

www.kikoauctions.com | 800.533.5456

Information is believed to be
accurate but not guaranteed.
KIKO Auctioneers



*Scan for auction
details, including
directions.*

*All sells to settle
the estate.*